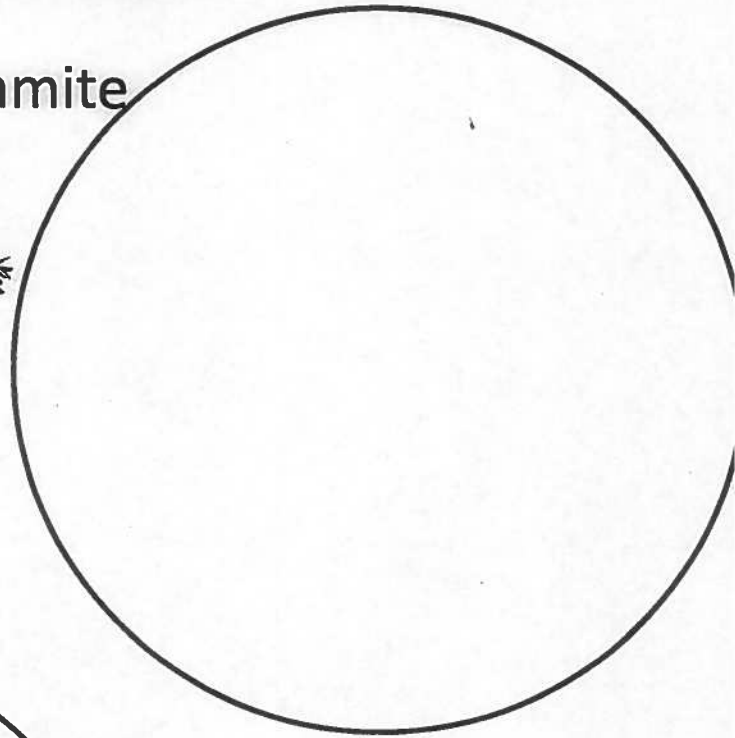
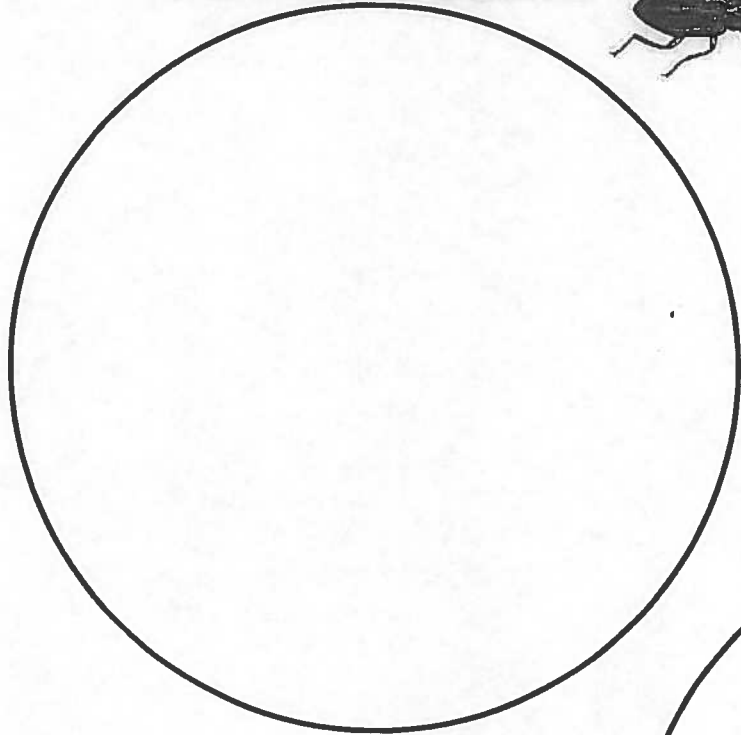
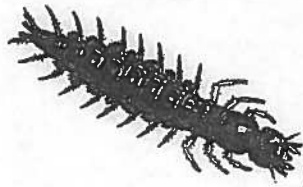


GROUP 1: SENSITIVE TO POLLUTION

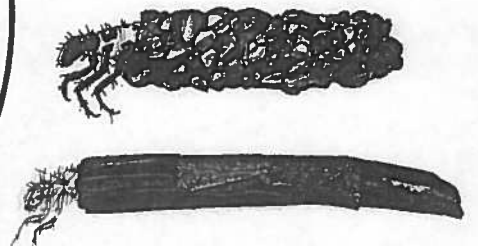
Adult Riffle Beetle



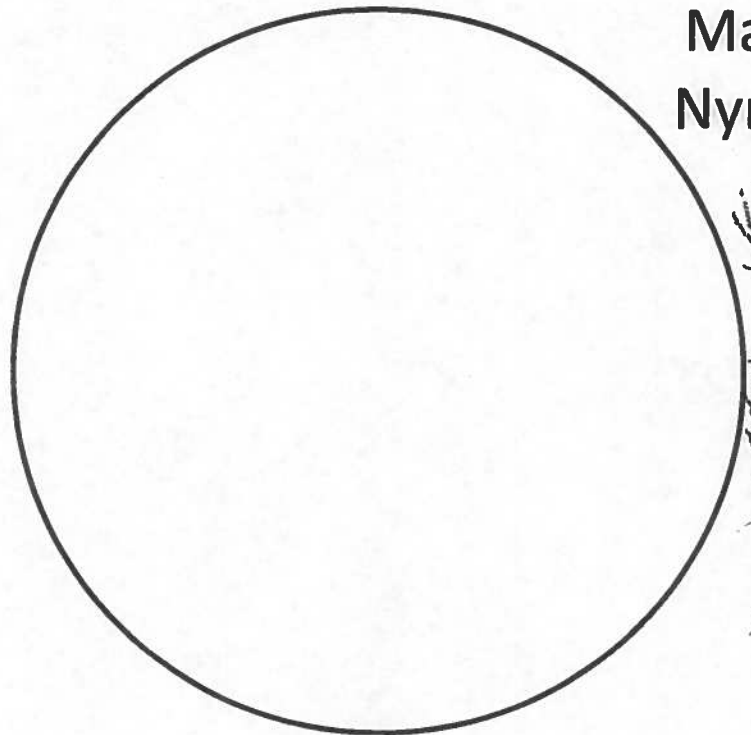
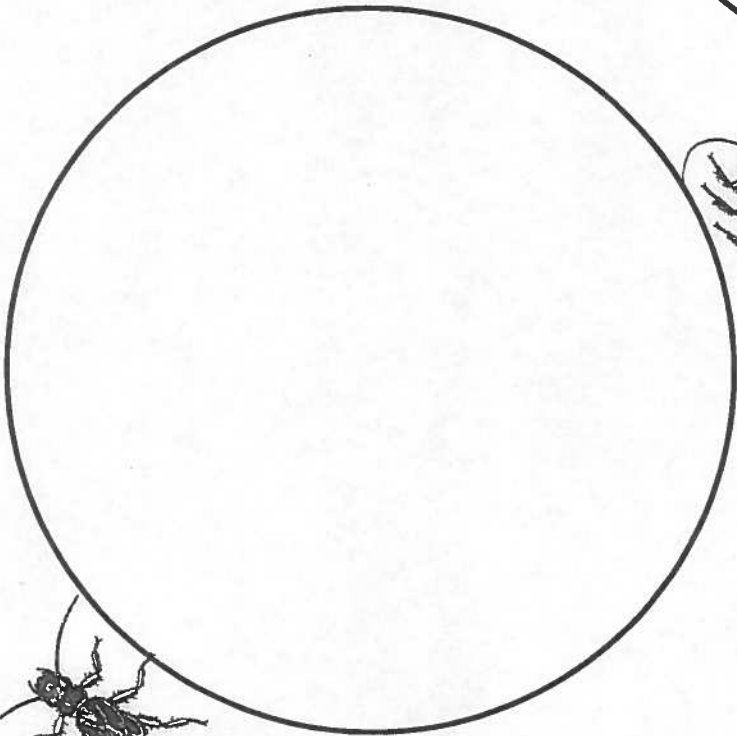
Hellgrammite



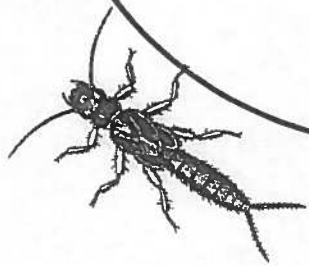
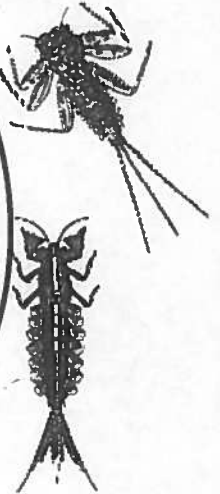
Stonefly Nymph



Most Caddis Fly Larva



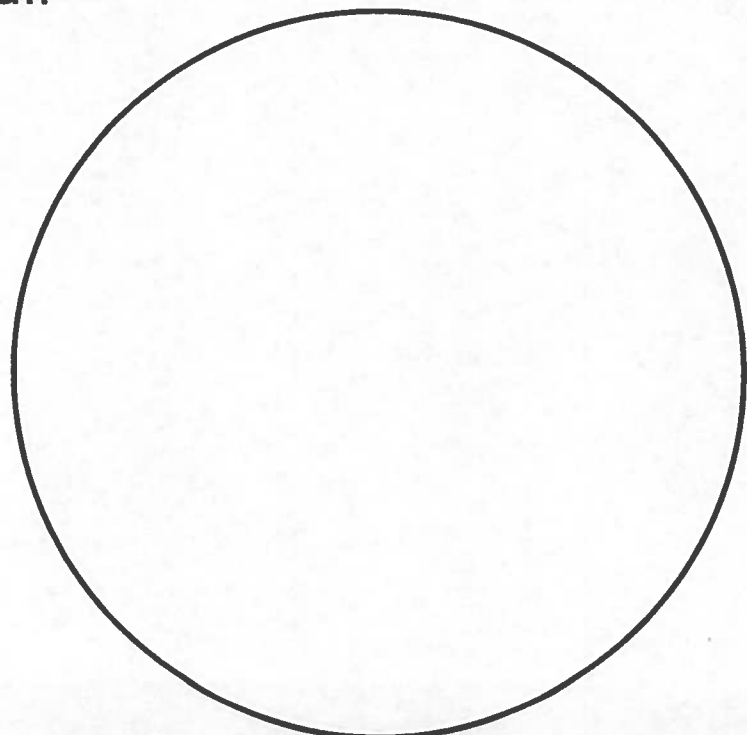
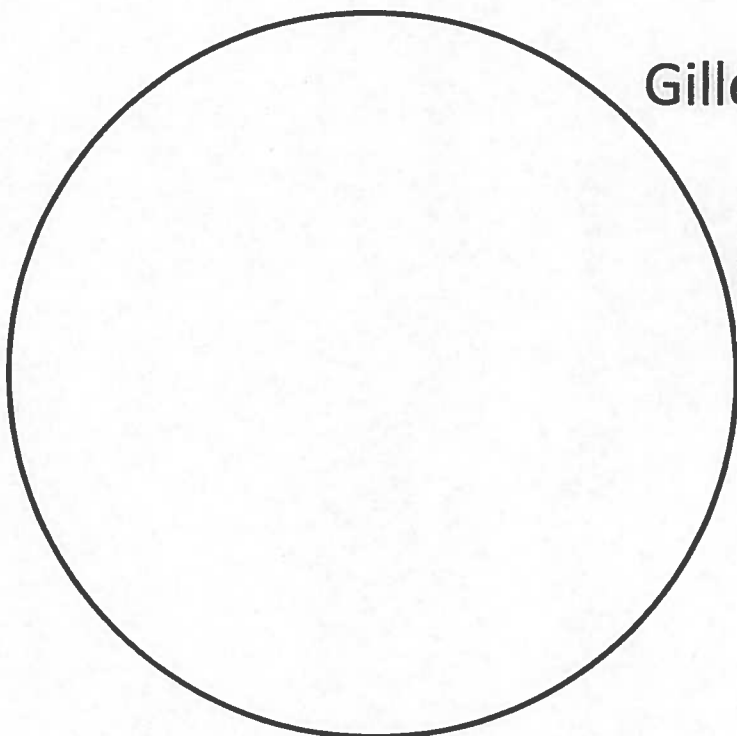
Mayfly Nymph



Gilled Snail

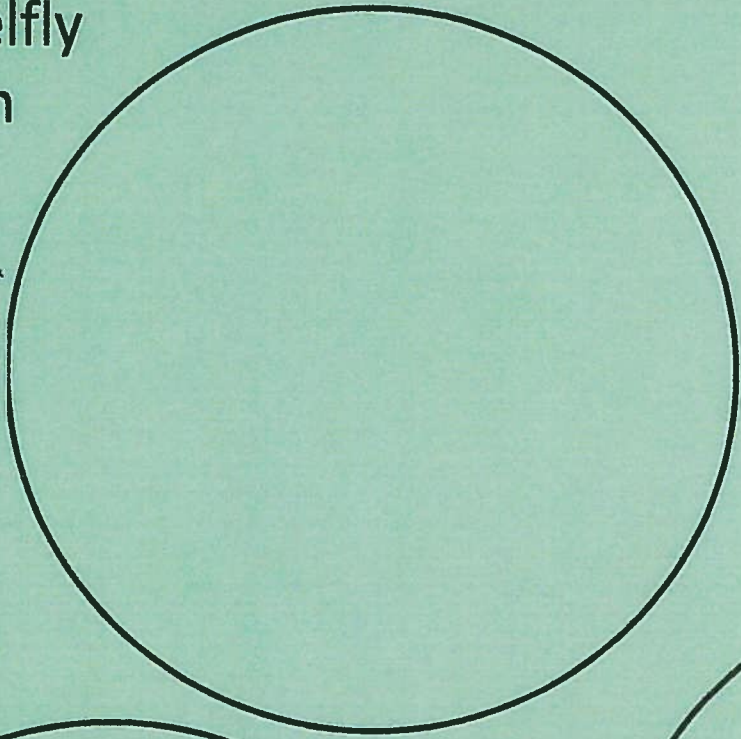
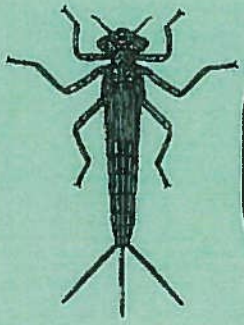


Water Penny Larva

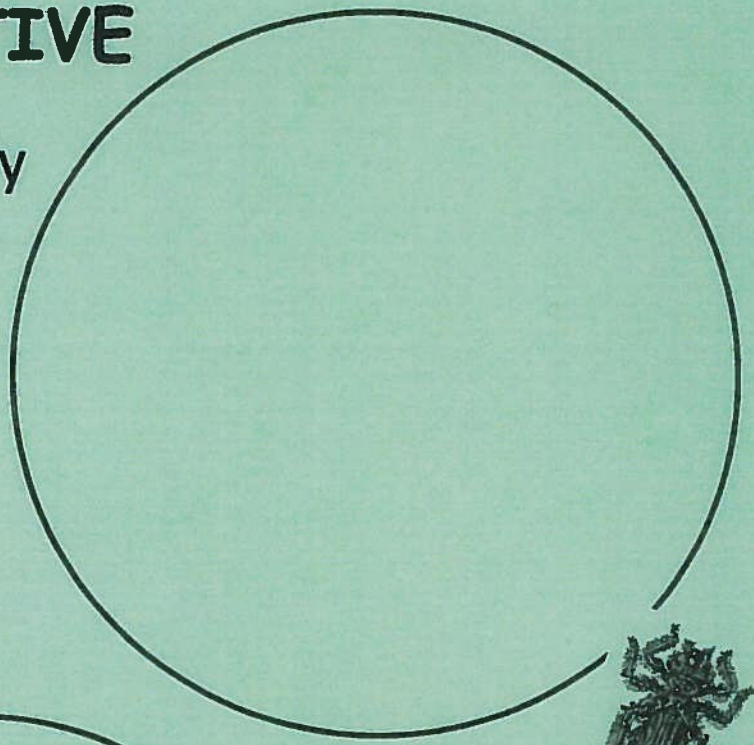


GROUP 2: SOMEWHAT SENSITIVE

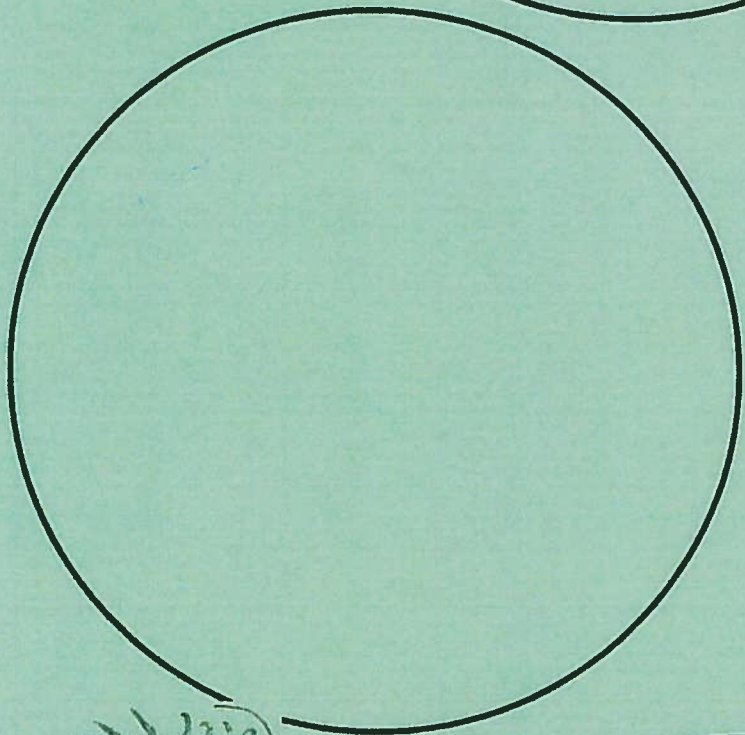
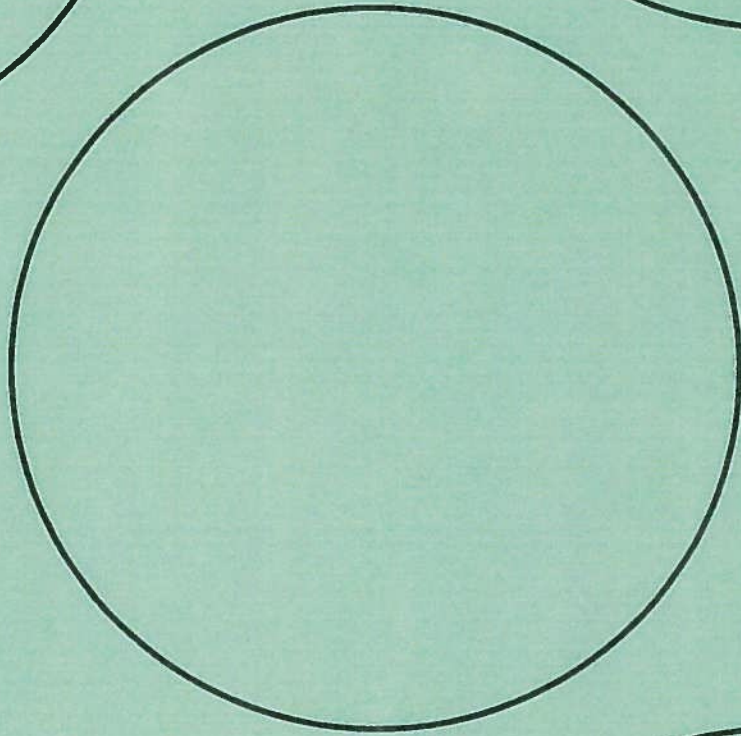
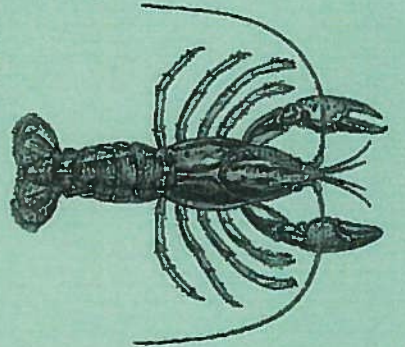
Damselfly Nymph



Dragonfly Nymph



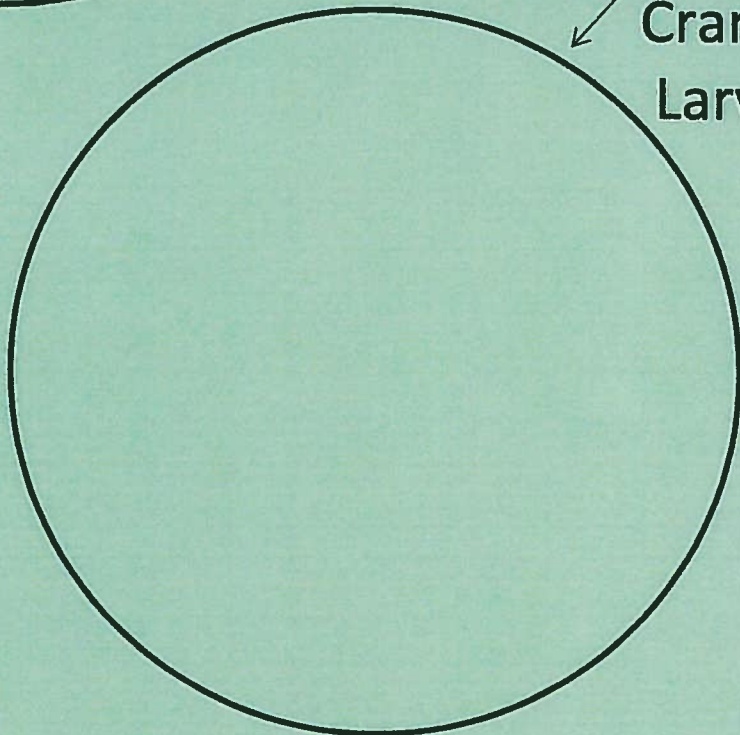
Crayfish



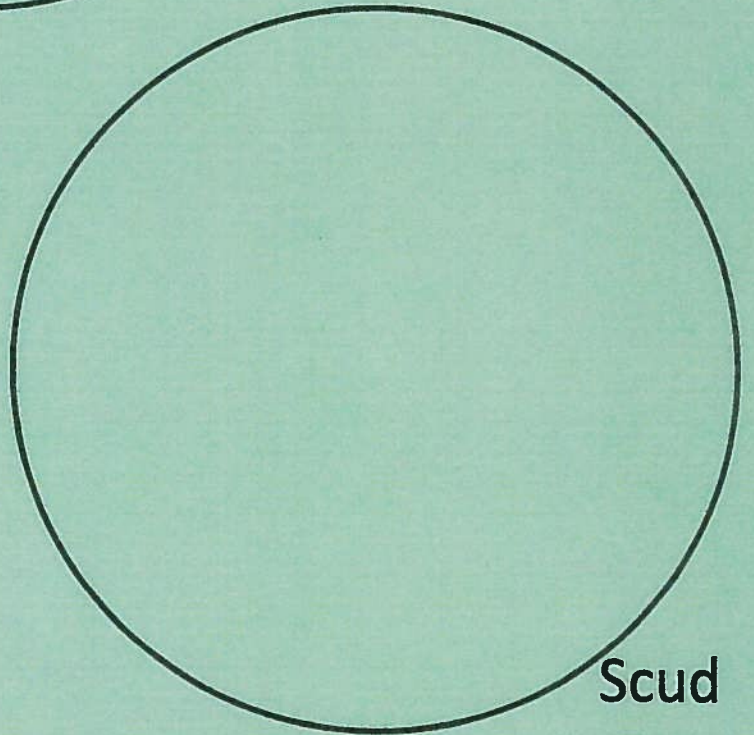
Aquatic Sowbug



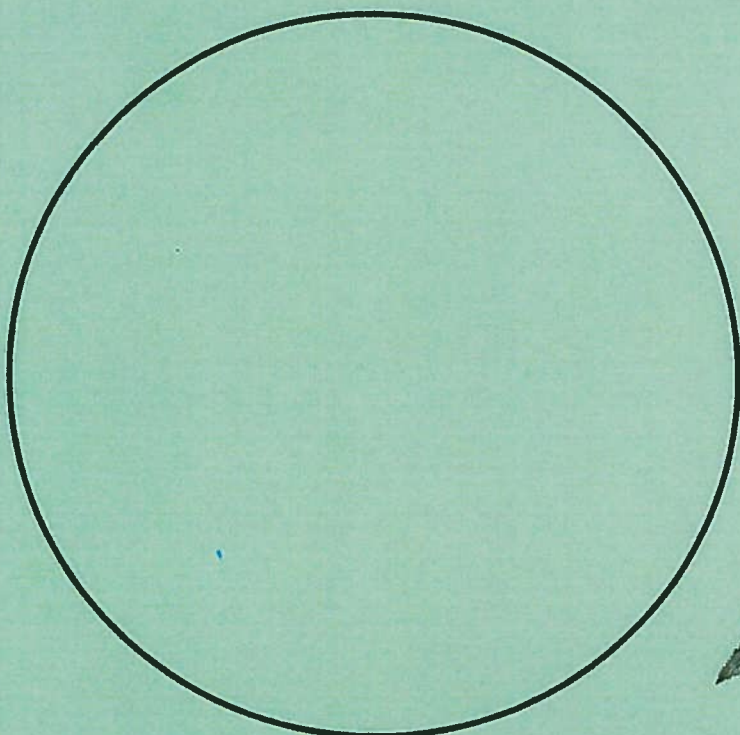
Crane fly Larva



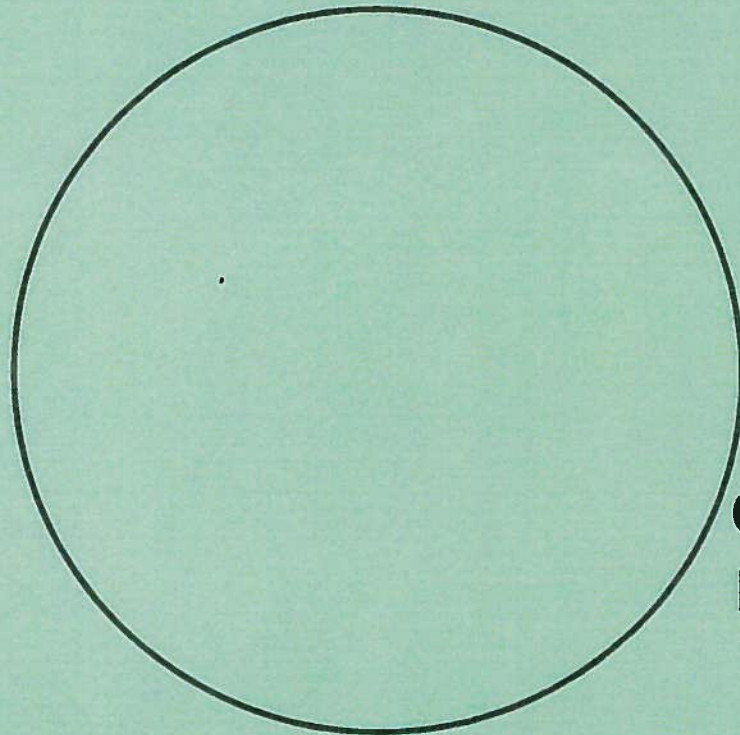
Scud



Fishfly & Alderfly Larva

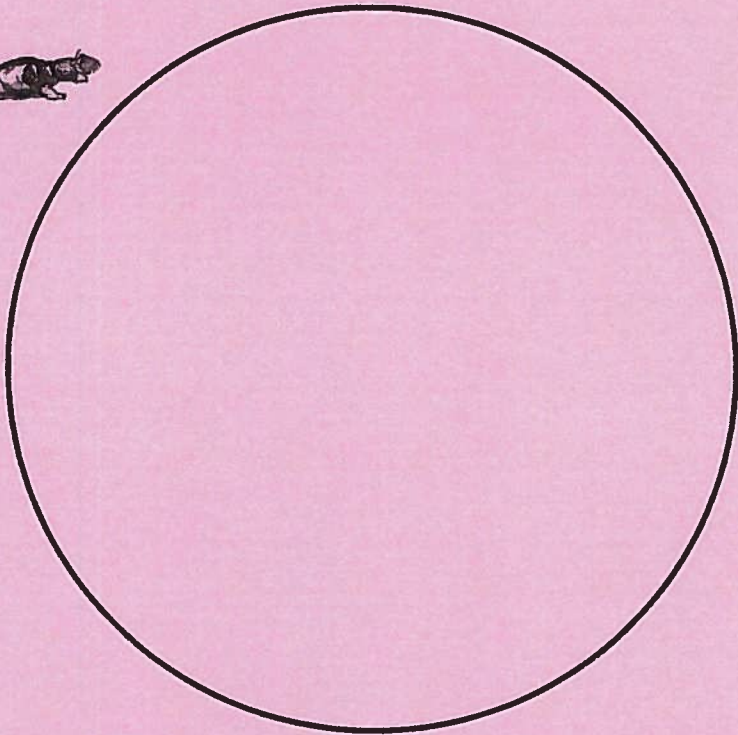


Clams & Mussels

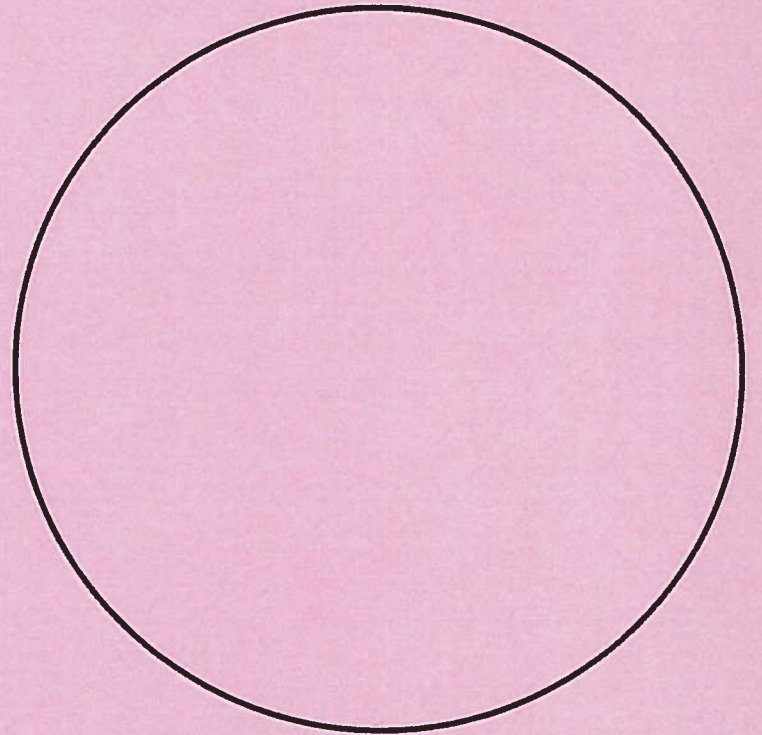


GROUP 3: Pollution Tolerant

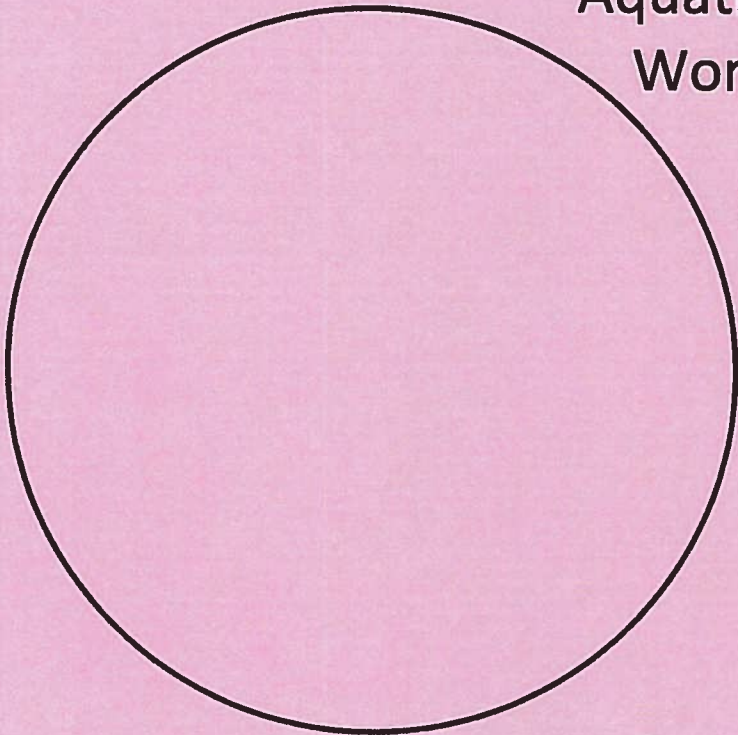
Blackfly Larva



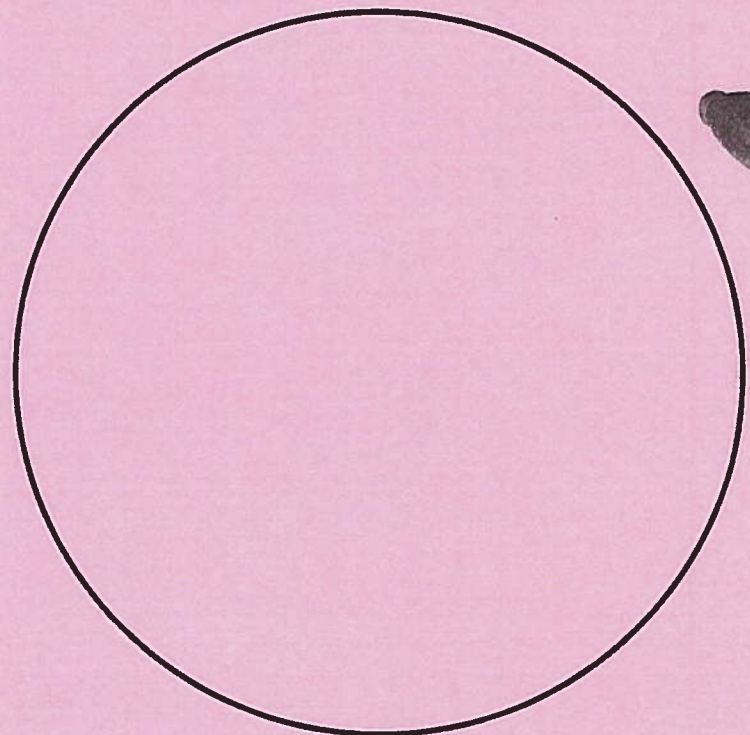
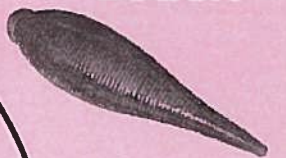
Midge Larva



Aquatic
Worms



Leach



Lunged or Pouch
Snail

